

Quick facts!

Language: English
Grades: Grade 8 to Grade 12
Matric examination: NSC (DBE)
Controlled class sizes
School times: 07:45 to 14:45

Meridian Pinehurst – building futures through excellent education

Our ethos is governed by Christian values, where learners are encouraged to explore and express their individuality within acceptable boundaries, and ultimately take responsibility for their actions.

We guide them to follow their hearts and minds to develop into the best people they can be.

Our dynamic curriculum covers problem-solving, creative thinking and the development of skills and values. Both individual and group work are evaluated.

Meridian Pinehurst produces a community of teenagers who know how to think innovatively, express their ideas and take charge of their own lives.

Learners are prepared for the National Senior Certificate (NSC) matriculation examinations set by the Department of Basic Education.



Cultural activities

Choir, music, drama and art



VALUE-ADDED PROGRAMMES

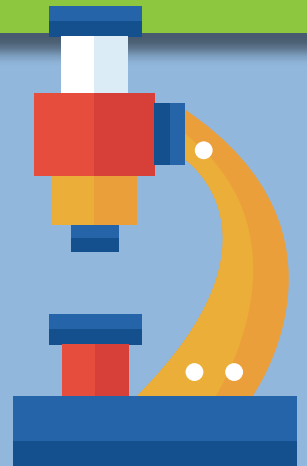
could include:

Character-building programmes to teach respect, good manners, hard work, honesty and integrity • respect for all cultures • self-worth • career guidance • entrepreneurship

Sports


Extramural activities

Cricket, tennis, chess, netball, soccer, hockey and athletics



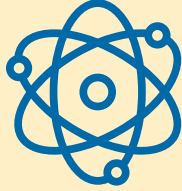
MERIDIAN
Pinehurst





Curriculum: Grade 8 to Grade 9

- English home language
- Afrikaans first additional language
- Mathematics
- Natural Sciences
- Social Sciences
- Technology
- Economic and Management Sciences (including Accounting)
- Life Orientation
- Creative Arts
- Computer Literacy



Curriculum: Grade 10 to Grade 12

- SUBJECT CHOICE MUST INCLUDE:**
- English home language
 - Afrikaans first additional language
 - Mathematics or Mathematical Literacy
 - Life Orientation

- 3 ADDITIONAL SUBJECTS WHICH COULD INCLUDE:**
- Accounting
 - Business Studies
 - Physical Sciences
 - Life Sciences
 - Geography
 - Computer Applications Technology
 - Visual Arts



How to enrol:

STEP 1:

All relevant forms are available on:
www.curro.co.za



WHAT HAPPENS NEXT?

STEP 2:

Complete the following:

- Application for admission
- Debit-order form

It is important to complete the application-for-admission form thoroughly and to attach ALL the relevant supporting documents.

STEP 3:

Application forms will be assessed.

STEP 4:

Once the learner has been accepted, relevant details will be captured, at which time parents receive an email confirming the learner's status of acceptance and a family code, and the account holder receives an invoice for the once-off, non-refundable enrolment fee and the banking details.



STEP 5:

Payment of the enrolment fee must be made to secure the learner's place for the next academic year. (Please retain the proof of payment for record purposes.)

STEP 6:

Please refer to www.curro.co.za regularly to stay up to date with all the relevant news and arrangements.

PLEASE NOTE:

A learner must benefit from Meridian's mainstream curriculum and it is therefore necessary to assess each application for admission. Applicants are assessed according to the normal entry requirements and, if necessary, extra assessments may be requested.

We look forward to welcoming you to the Meridian family.

Contact Details:

Tel.: 021 970 4540

Fax: 021 979 0866

Email:

info.pinehurst@curro.co.za

